

**AQUA**  
*Performance*



Self-Retracting Boarding Steps  
for Personal Watercrafts

**\*READ ALL OF THESE INSTRUCTIONS THOROUGHLY BEFORE BEGINNING THE INSTALLATION OF THE BOARDING STEP. MAKE SURE YOU HAVE ALL PARTS & TOOLS TOGETHER BEFORE BEGINNING!**

## ◆ WARNING! ◆

Do not use the "Aqua Step" when craft is turned on or in motion. As serious injury may occur. Do not use the step to lift the craft, or to pull anyone or anything. Serious hull damage may occur. The "Aqua Step" is intended for boarding your craft in the water only. "Aqua Performance" will not be responsible for damage or injury due to improper use or installation of step.

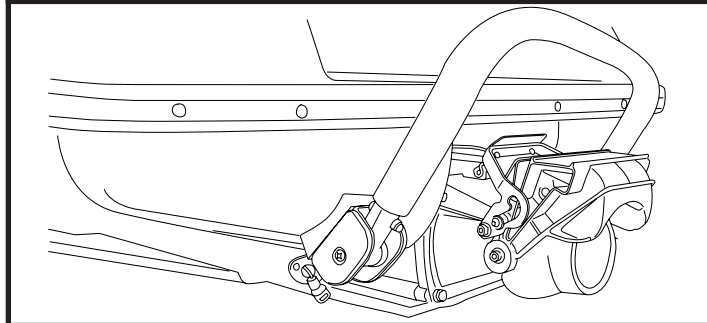
U.S. & Canada Patent #5,152,244 - #5,458,080 - #5,927,433 - #5,970,905 - #6,021,733

### 1. TOOLS NEEDED:

- Electric drill with a 3/16" drill bit
- Small level
- Pencil or Washable Marker
- Small flashlight
- Wire cutters
- Tape Measure
- Phillips Screwdriver
- You'll also need a tube of marine silicone or thread lock.
- If your kit comes with AVK inserts, you will need a 25/64" drill bit (no substitutions), a wrench and a socket wrench.

**2002ATX, 1085HDX, 1095TD, 1075PDT  
1077PDT, 1096SLTX, 1096SL9**

These watercraft models require your step to be mounted directly under the craft's curve.



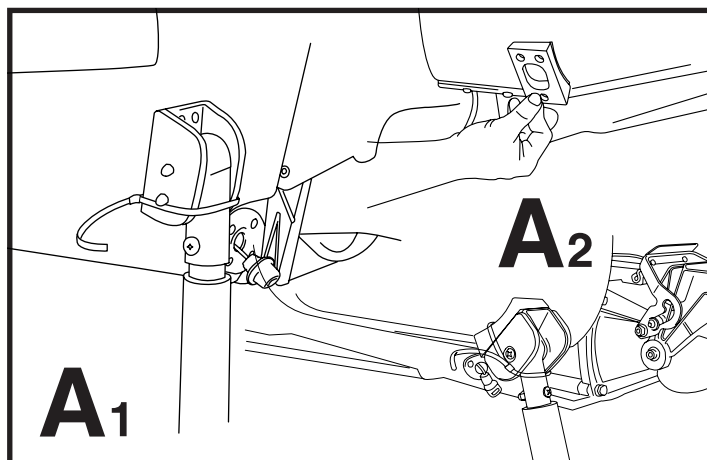
★ If you have the following step models: P/N 1075PDT, 1077PDT, 1085HDX, 1095TD, 2002ATX, 1096SLTX or 1096SL9, please note the special instructions while installing your step.

### 2. POSITIONING THE STEP AND MARK HOLES FOR DRILLING

Secure the step into its down-extended position using two of the four zip ties. **SEE FIG. A1.**

**If your step comes with wedges:** place wedges behind the brackets. Wedges should be placed with the thicker side on the outside - the flat back should be against the back of the bracket. Secure the step into its down position using two of the four zip ties. **SEE FIG. A2.**

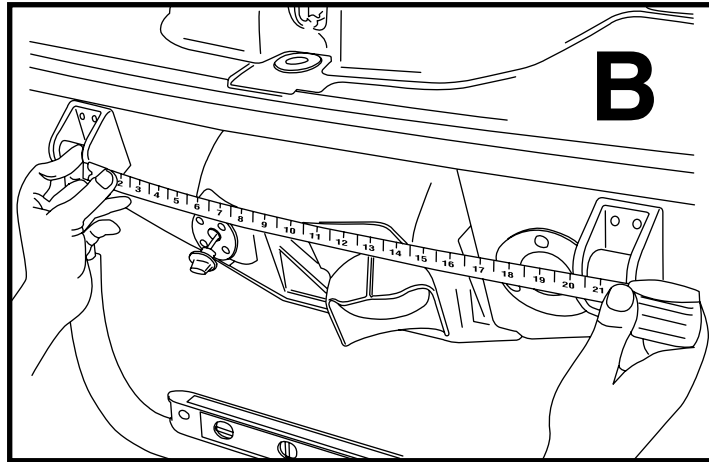
**NOTE:** Wedge shapes vary depending on your watercraft model.



Center the step on the hull of the craft, finding the lowest location where your step can be centered. If your craft has a drain plug, center step above the drain plug, (you may mark the exact center of your craft, then measured to both sides of that mark to reassure your center)

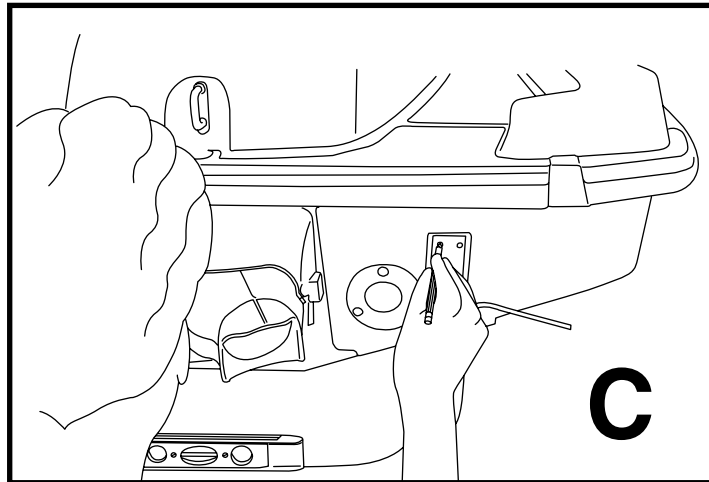
**SEE FIG. B**

Make sure the step is level. This is the only time you may need a helper for this job.



Balancing the level on the step, mark the top holes for drilling with a pencil, or washable marker. **SEE FIG. C**

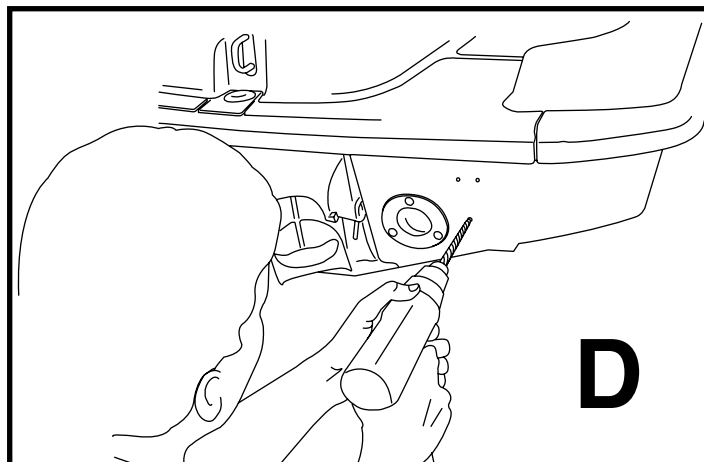
Clip the zip ties, replace the step against the craft using your marked holes as your guide, and mark the two lower holes for drilling.



### **3. DRILLING: Note length of the screws. Only drill the length of those screws!**

Verify that the spots you marked to be drilled are exactly the spots you want to drill. Drill one hole and take your flashlight and look into the hole that is the aft of the engine compartment. Make sure nothing impedes your drilling.

Now simply drill the other five holes, straight and true, into your watercraft. Note length of the screws; you'll only need to drill the length of those screws! **SEE FIG. D**

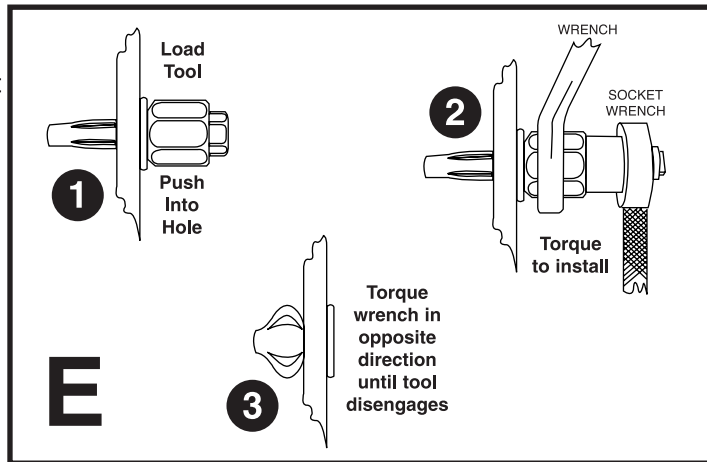


#### 4. IF YOUR KIT COMES WITH AVK INSERTS:

Verify that the spots you marked to be drilled are exactly the spots you want to drill. Using a 25/64" drill bit (no substitutions), drill one hole and take your flashlight and look into the hole that is the aft of the engine compartment. Make sure nothing impedes your drilling.

Insert all 6 aluminum AVK inserts into drilled holes. Load tool and push into hole. Using your wrench, hold tool in place to prevent turning. Now torque down the hex screw with the socket wrench clockwise. Once finished, remove installation tool by torquing counter clockwise. Do this same operation for all six holes. **SEE FIG. E**

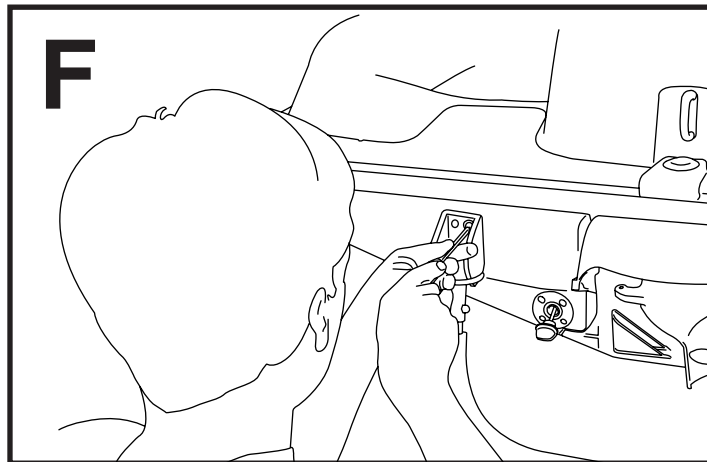
**NOTE:** P/N 1096SL9 - Your step comes with both screws and AVK inserts. You will need to drill the top holes of the bracket (4 total) with a 25/64" drill bit and the bottom holes (2 total) with a 3/16" drill bit. See instruction nos. 4 and 5 for both hardware installations.



#### 5. ASSEMBLY

Again, strap the step into its down position to install the top four screws. Apply the marine sealant and screw before inserting. Leave the screws slightly loose until all six are installed.

Now cut the zip ties and insert the two lower screws, with thread lock applied. **SEE FIG. F**



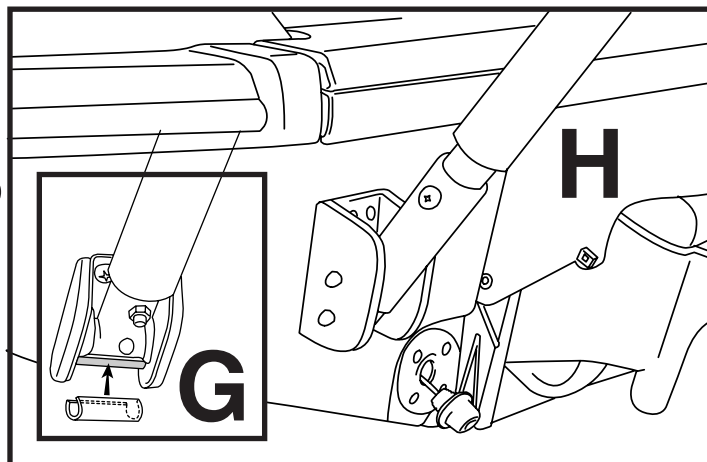
#### 6. FINISHING UP

With all screws loosely installed, check that the step springs freely up and down without binding.

Now tighten all screws. Next, take the clear tubing and place around stop pins (the straight pin located at the bottom of each bracket).

**SEE FIG. G** Allow 24 hours (or recommended curing time from your specific silicone or threadlock) before putting watercraft in water. **SEE FIG. H**

**NOTE:** During your first few outings with your new Aqua Step, make frequent checks of the engine compartment to ensure that water is not entering through the holes you drilled.



#### 7. MAINTENANCE

To ensure the best operation of your aqua step, Aqua Performance recommends that you hose off your step after every use, as you would the rest of your watercraft. To remove sand build up: You will need to remove the side caps and use a hose to spray water inside the spring mechanism while moving the step up and down. When finished rinsing, we recommend and use Prolong Oil as a lubricant onto the spring. Replace caps and bolts to ensure a proper fit.